

# RF Smart AC Switch & Push Switch

Model No.: SS-B

RF AC Switch/Relay output/Push on/off/Wall junction box mounting

## Features

- RF smart switch with relay output, without dimming function.
- To switch single color LED lamps, traditional incandescent and halogen lights.
- Compatibility with RF 2.4G dimming remote control.
- Connect with external push switch optional.
- Easy to be placed in standard wall junction box behind a push switch.



CE RoHS EMC LVD

## Technical Parameters

| Input and Output    |                         |
|---------------------|-------------------------|
| Input voltage       | AC100-240V              |
| Output voltage      | AC100-240V              |
| Output current      | Max 1.5A                |
| Output power        | 150-360W                |
| Input signal        | RF 2.4GHz + Push switch |
| RF Control distance | 30m(Barrier-free space) |

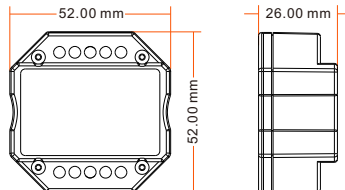
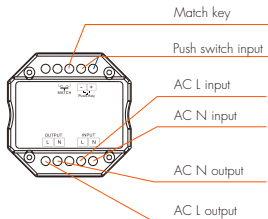
| Environment             |                   |
|-------------------------|-------------------|
| Operation temperature   | Ta: -30°C ~ +55°C |
| Case temperature (Max.) | Tc: +65°C         |
| IP rating               | IP20              |

| Safety and EMC       |   |
|----------------------|---|
| EMC standard (EMC)   | ETSI EN 301 489-1 V2.2.3<br>ETSI EN 301 489-17 V3.2.4 |
| Safety standard(LVD) | EN 62368-1:2020+A11:2020                              |
| Radio Equipment(RED) | ETSI EN 300 328 V2.2.2                                |
| Certification        | CE, EMC, LVD, RED                                     |

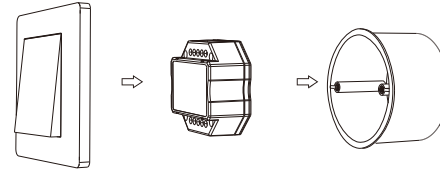
| Warranty |         |
|----------|---------|
| Warranty | 5 years |

| Weight       |          |
|--------------|----------|
| Net weight   | 0.041 kg |
| Gross weight | 0.051 kg |

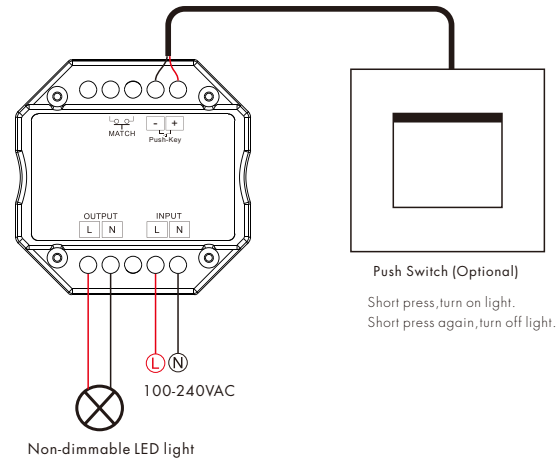
## Mechanical Structures and Installations



## Typical Wall Junction Box Mounting



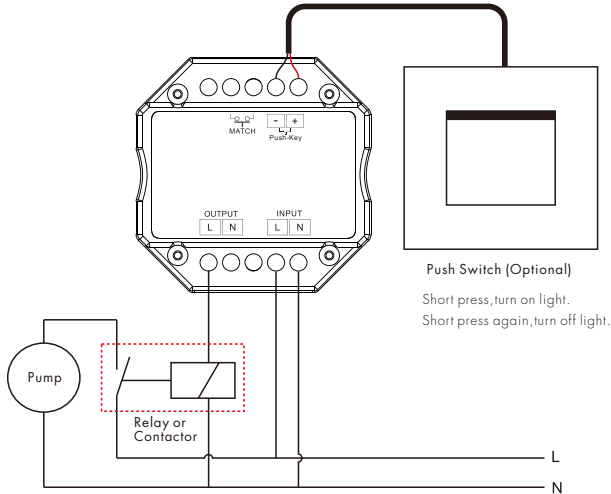
## Wiring diagram



### Note:

1. The upper Push-key input port can not connect any AC or DC power supply, otherwise, the product will be damaged.
2. If output connect with capacitive or inductive load, the maximum output current only up to 1.5A. If output connect with resistive load, the maximum output current may up to 5A.

3. An additional AC relay or contactor is needed when total input current of the load (such as pump) is higher than 1.5A or inrush current is greater than 15A.



### Match Remote Control (two match ways)

End user can choose the suitable match/delete ways. Two options are offered for selection:

#### Use the controller's Match key

**Match:**  
Short press match key, immediately press on/off key (single zone remote) or zone key (multiple zone remote) of the remote.

**Delete:**  
Press and hold match key for 5s to delete all match, The light blinks 5 times means all matched remotes were deleted.

#### Use Power Restart

**Match:**  
Switch off the power, then switch on power, repeat again. Immediately short press on/off key (single zone remote) or zone key (multiple zone remote) 3 times on the remote.

**Delete:**  
Switch off the power, then switch on power repeat again. Immediately short press on/off key (single zone remote) or zone key (multiple zone remote) 5 times on the remote.

### Available RF remote



**RU4**  
4 zone remote



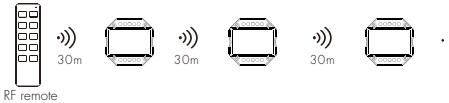
**RU8**  
8 zone remote



**PF1-2**  
2 zone remote

### Application notes

1. All the receivers in the same zone.



**Auto-transmitting:** One receiver can transmit the signals from the remote to another receiver within 30m, as long as there is a receiver within 30m, the remote control distance can be extended.

**Auto-synchronization:** Multiple receivers within 30m distance can work synchronously when they are controlled by the same remote.

Receiver placement may offer up to 30m communication distance. Metals and other metal materials will reduce the range. Strong signal sources such as WiFi routers and microwave ovens will affect the range.

We recommend for indoor applications that receiver placements should be no further apart than 15m.

2. Each receiver (one or more) in a different zone, like zone 1, 2, 3 or 4.

