

## Bluetooth Gateway

Model No.: WG-B

Bluetooth Mesh gateway has a built-in highly integrated wireless Wi-Fi module and a low-power wireless bluetooth module.

On TUYA Smart Life App, users can realize functions such as device adding, reset, third-party control and Bluetooth (single point & Mesh) group control, and match with a variety of Bluetooth 1-5 color constant voltage LED controller, Bluetooth triac dimmer, Bluetooth 0/1-10V dimmer or Bluetooth dimming LED driver to meet smart home applications.



FC CE RoHS EMC LVD RED

### Features

- Plug and play, easy to use.
- Integrated with WiFi and bluetooth single point & Mesh communication mode, achieve remote WiFi control and local bluetooth control.
- WiFi signal and bluetooth single point & Mesh signal are stable and reliable, can cover a wide area, preventing interference, and feature lower power consumption.
- To strengthen security, the device adopts industry-advanced encryption to transmit information on both WiFi and bluetooth terminal.
- The same local area network can connect multiple Bluetooth gateway via Smart Life App.
- Long press reset key for 5s to clear previous connection, enter configure mode rapidly.

### Technical parameters

#### 1. Physical characteristics

Specification	Details
State indicator	Two LED (Wi-Fi+Bluetooth)
Operation key	One key (for resetting)
Input voltage	MicroUSB DCSV
Input current	<1A
Operation temperature	-10-55°C
Operation humidity	10%-90%RH(noncondensable)
Storage temperature	-20-60°C
Storage humidity	5%-90%RH(noncondensable)
Hardware port	One Micro-USB
Wireless technology	Wi-Fi 802.11 b/g/n Bluetooth single point&Mesh
Type of antennae	Built in on-board antenna

#### 2.RF characteristics

Specification	Wi-Fi	Bluetooth
Wireless frequency	2.400 ~2.4835GHz	2.400-2.480 GHz
Transmitting power	21dBm	7dBm
Signal channels	CH1-CH11	CH0-CH39
Transmitting rate	11b:1,2,5,5, 11(Mbps) 11g:6,9,12,18,24,36, 48,54(Mbps) 11n:HT20 MCS0~7 11nHT40 MCS0~7	1Mbps (Bluetooth 4.2) 2Mbps (Bluetooth 5.0)

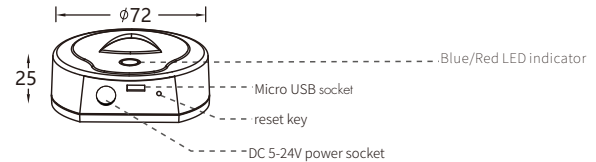
#### 3.Network performance

Specification	Details
Wireless encryption	AES 128bit Encryption
	WPA-PSK/WPA2-PSK , WPA/WPA2 Security mechanism
Network administration	App remote configuration
	Wi-Fi module firmware upgrade Bluetooth module firmware upgrade
The number of connecting sub-devices	Max Node =64

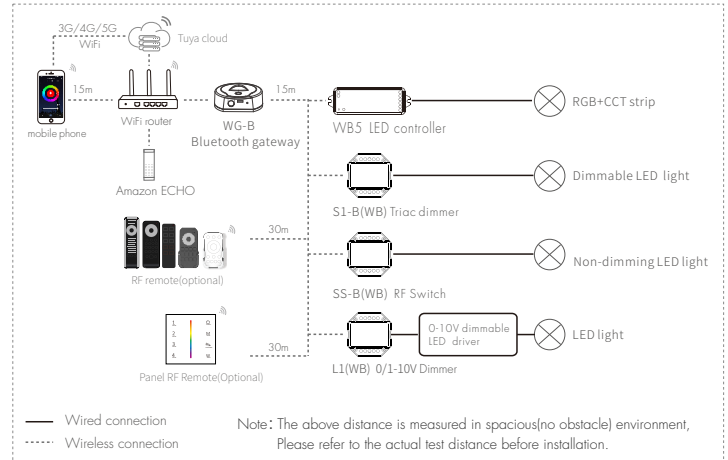
#### 4. State indicator & reset

<ul style="list-style-type: none"> <li>• <b>Blue light indicates Bluetooth state</b></li> <li>* Blinking means that gateway is waiting for connect and allowed to access the network</li> <li>* Indicator keeps on means gateway is no activated</li> <li>* Indicator keeps off means gateway has been activated</li> </ul>
<ul style="list-style-type: none"> <li>• <b>Red light indicates Wi-Fi state</b></li> <li>* Indicator keeps on means gateway has been connected</li> <li>* Blinking means that gateway is waiting for connect</li> <li>* Indicator keeps off means gateway has configure Wi-Fi, but is unable to connect Wi-Fi.</li> </ul>
<ul style="list-style-type: none"> <li>• <b>Method for resetting</b> : After long press reset key for 5s, then red LED indicator flashes quickly.</li> </ul>

### Mechanical structure and installation



### System Wiring



### Preparation for usage

#### Download and open APP

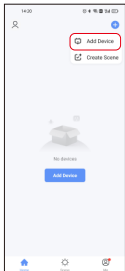
In the App store or Google play, search for "Smart Life " or scan the QR code on the manual to download and then install the smart App.



#### Operation

##### Tuya APP cloud control

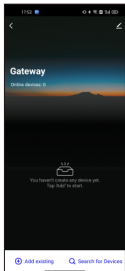
1. Power on the gateway.
2. Make sure that the gateway's red LED indicator is blinking (If the indicator is in other status, long press reset key until indicator flash).
3. Open the WiFi, at this time, mobile phone and gateway are in the same local area network.
4. Open Smart Life app, tap "+" in the upper right corner, add Bluetooth gateway via searching automatically.
5. After add gateway successfully, tap "Gateway" icon on home page, then add sub-devices according to prompts in the App.



tap "+", prepare for adding devices



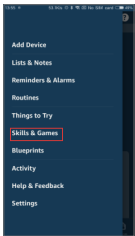
tap "Gateway" icon on home page, enter operation interface of Gateway



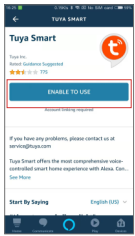
add other sub-devices via searching automatically

### Voice control (Amazon ECHO)

1. Power on the gateway.
2. Make sure that the gateway's red LED indicator is blinking (If the indicator is in other status, long press reset key until indicator flash).
3. Open the WiFi, bluetooth and location of your phone.
4. Open Smart Life app, tap "+" in the upper right corner, add Bluetooth gateway via searching automatically.
5. After add gateway successfully, tap "Gateway" icon on home page, then add sub-devices according to prompts in the App.
6. Make sure Amazon ECHO is powered on.
7. Connect Amazon ECHO to Internet via Amazon Alexa App.
8. Tap "Skills&Games" in the Alexa app menu.
9. Then search for "Smart Life", tap "Enable" to enable the Skill.
10. Enter the Smart Life App account and password, then tap "Link Now" to link your Smart Life account to enable the Skill.
11. After link Smart Life account successfully, you can control sub-devices connected with our gateway via voice commands.



Tap "Skills&Games"



Tap "Enable" to enable the Skill



Enter the Smart Life App account and password,

### Note for applications

1. If gateway cannot connect with WiFi, check if your phone is connected to WiFi and whether open bluetooth and location of your phone; if there is no problem in your mobile phone, please long press reset key for 5s, until indicator flash rapidly for several times.
2. When the gateway is be used, it must be connected to socket all the time.
3. In order to have stable connection, we recommend that install gateway in the central area of all sub-devices and stay 2-6 meters away from WiFi router; the distance between gateway and sub-devices are no more than 20 meters and there be no more than two walls between them.
4. Try to avoid mental blocks and load-bearing walls between gateway and router, gateway and sub-devices; If there are thicker solid walls or high-power electrical appliances (for instance,refrigerator, air conditioner, electric heater and so on) between gateway and sub-devices, the communication distance will decreases to only 3-5 meters.
5. The phone must connect with WiFi firstly, then connect sub-devices to gateway by Tuya App.
6. The maximum number of sub-devices connecting with the same gateway is 64.