

Wall Mounted Touch Panel

Model No.: TW1, TW2, TW4, TW5

1-5 color/Glass touch panel/Touch color wheel/Wireless remote 30m distance/CR2032 battery



TW1
1 Zone Dimming

TW2
1 Zone CCT

TW4
1 Zone RGB/RGBW

TW5
1 Zone RGB+CCT

Features

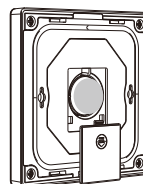
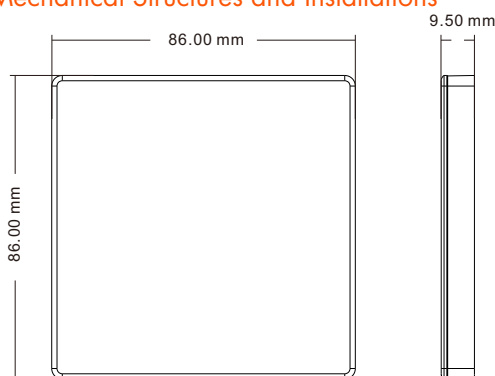
- Touch panel 1-5 color RF remote.
- Each Touch panel can remote control multiple RF 2.4G LED controllers.
- Ultra sensitive high strength glass touch panel with touch color wheel in the middle.
- Touch keys with blue LED indicator.
- Free installation, no wiring, removable.
- CR2032 battery powered.
- White & Black available.

CE RoHS LVD RED

Technical Parameters

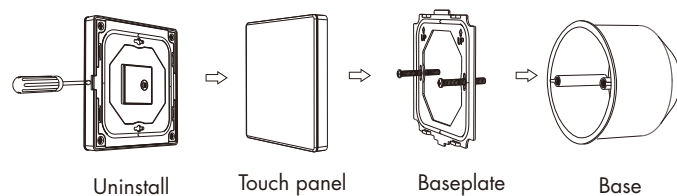
Input and Output		Safety and EMC		Environment	
Output signal	RF(2.4GHz)	EMC standard (EMC)	ETSI EN 301 489-1 V2.2.3 ETSI EN 301 489-17 V3.2.4	Operation temperature	Ta: -30°C ~ +55°C
Working voltage	3VDC(CR2032)	Safety standard(LVD)	EN 62368-1:2020+A11:2020	Case temperature (Max.)	Ta: +65°C
Working current	<8mA	Radio Equipment(RED)	ETSI EN 300 328 V2.2.2	IP rating	IP20
Standby current	<16µA	Certification	CE,EMC,LVD,RED	Package	
Standby time	1 year	Warranty	5 years	Size	L100x W92 x H16.5mm
Remote distance	30m (Barrier-free space)			Gross weight	0.137kg

Mechanical Structures and Installations



Note: If the LED indicator is not on when press key, it is due to dead battery or bad contact caused by multiple plugging, please replace the battery, or raise the battery shrapnel with a screwdriver

Installation diagram:



To fix the panel, two options are offered for selection:

- Option 1: fix it on the wall with two screws.
- Option 2: adhere it to the wall with paster.

Match with RF LED controller (two match ways)

End user can choose the suitable match/delete ways. Two options are offered for selection:

Use the controller's Match key

Match:

Short press match key, immediately press on/off key on the touch panel.

The LED indicator fast flash a few times means match is successful.

Delete:

Press and hold match key for 5s to delete all match.

The LED indicator fast flash a few times means all matched remotes were deleted.

Use Power Restart

Match:

Switch off the power, then switch on power, repeat again.

Immediately short press on/off key 3 times on the touch panel.

The light blinks 3 times means match is successful.

Delete:

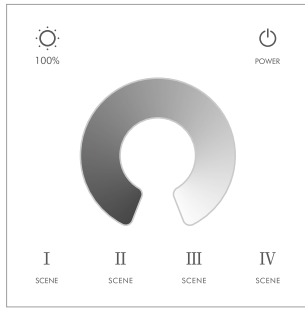
Switch off the power, then switch on power, repeat again.

Immediately short press on/off key 5 times on the touch panel.

The light blinks 5 times means all matched remotes were deleted.

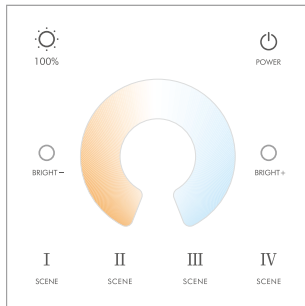
Key function

• TW1 Single color panel



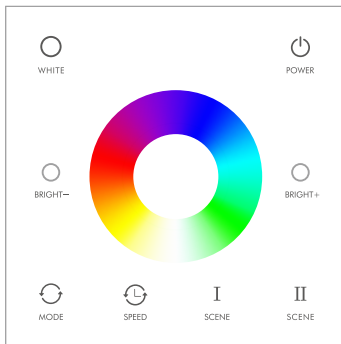
- POWER — Turn on/off light.
- 100% — Short press set 100% brightness.
- Touch to change brightness.
- I II III IV
SCENE SCENE SCENE SCENE — Short press recall scene, Long press 5s to save the current state into I / II / III / IV.

• TW2 Dual color panel



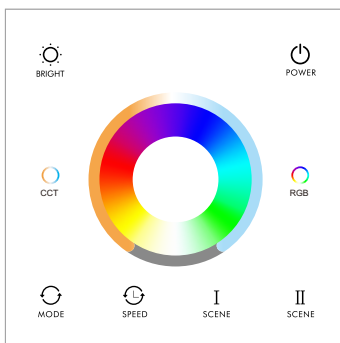
- POWER — Turn on/off light.
- 100% — Short press set 100% brightness.
- BRIGHT- — Brightness -, 10 levels.
- BRIGHT+ — Brightness +, 10 levels.
- Touch to change color temperature.
- I II III IV
SCENE SCENE SCENE SCENE — Short press recall scene, Long press 5s to save the current state into I / II / III / IV.

• TW4 RGB/RGBW panel



- POWER — Turn on/off light.
- WHITE — For RGB light, short press to get white(RGB mix), long press 1-6s adjust saturation. For RGBW light, short press turn on W channel, long press 1-6s adjust W brightness.
- BRIGHT- — Brightness -, 10 levels.
- BRIGHT+ — Brightness +, 10 levels.
- Touch to change static RGB color.
- MODE — Short press run next dynamic mode, long press 2s run mode-cycle.
- SPEED — For dynamic mode, adjust speed, short press 10 levels, long press 2s get the default speed. For static color, adjust saturation, short press 11 levels, long press 1-6s for continuous adjustment.
- I II
SCENE SCENE — Short press recall scene, Long press 5s to save the current state into I / II.

• TW5 RGB+CCT panel



- POWER — Turn on/off light.
- BRIGHT — Adjust brightness, 10 levels.
- Adjust RGB color, 7 color cycle (red, yellow, green, cyan, blue, purple, white). at the same time, multi-color touch wheel become RGB color wheel.
- Adjust color temperature, 3 color cycle (warm white, natural white, cold white). at the same time, multi-color touch wheel become color temperature wheel.
- When it is color temperature wheel, touch to change color temperature. When it is RGB color wheel, touch to change RGB color.
- MODE — Short press run next dynamic mode, long press 2s run mode-cycle.
- SPEED — For dynamic mode, adjust speed, short press 10 levels, long press 2s get the default speed. For static color, adjust saturation, short press 11 levels, long press 1-6s for continuous adjustment.
- I II
SCENE SCENE — Short press recall scene, Long press 5s to save the current state into I / II.

Safety information

1. Read all instructions carefully before you begin this installation.
2. When installing battery, pay attention to the battery positive and negative polarity.
A long time without the remote control, remove the battery.
When remote distance becomes smaller and insensitive, replace the battery.
3. If no response from the receiver, please re-match the remote.
4. Gently handle remote, beware of falling.
5. For indoor and dry location use only.