

0/1-10V RF + Push Dimmer

Model No.: L1

RF dimming / Push dimming / 0-10V or 1-10V / Wall junction box mounting

Features

- 0/1-10V RF or AC push dimmer, 1 channel output.
- Output 1 channel 0/1-10V signal, connect with 0/1-10V dimmable driver.
- 0-10V or 1-10V output selectable by DIP switch.
- 256 levels 0-100% dimming smoothly without any flash.
- Compatibility with RF 2.4G single zone or multiple zone dimming remote control.
- Connect with external push switch to achieve on/off and 0-100% dimming function.
- Light on/off fade time 3s selectable.
- Easy to be placed in standard wall junction box behind a push switch.

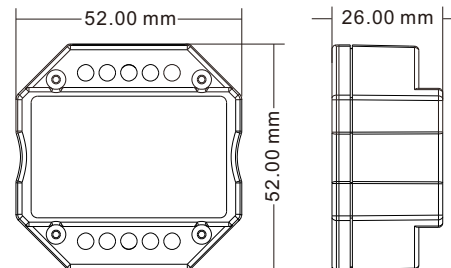
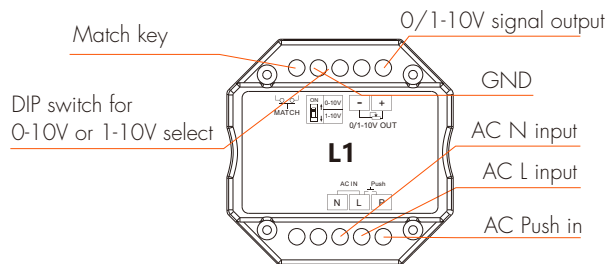


CE RoHS RED

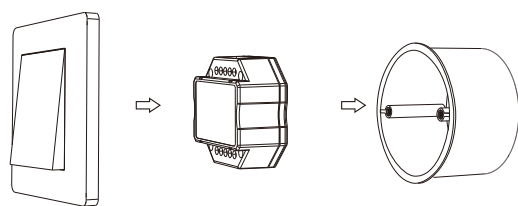
Technical Parameters

Input and Output		Safety and EMC		Environment	
Input voltage	AC100-240V	EMC standard (EMC)	ETSI EN 301 489-1 V2.2.3	Operation temperature	Ta: -30 °C ~ +55 °C
Output signal	0-10V (20mA)		ETSI EN 301 489-17 V3.2.4	Case temperature (Max.)	Ta: +65 °C
		Safety standard	EN 62368-1:2020+A11:2020	IP rating	IP20
Dimming data		Radio Equipment(RED)	ETSI EN 300 328 V2.2.2	Package	
Input signal	RF 2.4GHz + Push Dim	Certification	CE,EMC,RED	Size	160x W60 x H40mm
RF control distance	30m(Barrier-free space)	Warranty		Gross weight	0.060kg
Dimming range	0-100%	Warranty	5 years		

Mechanical Structures and Installations



Typical Wall Junction Box Mounting



Match Remote Control (two match ways)

End user can choose the suitable match/delete ways. Two options are offered for selection:

Use the controller's Match key

Match:

Short press match key, immediately press on/off key (single zone remote) or zone key (multiple zone remote) of the remote.

Delete:

Press and hold match key for 5s to delete all match, The light blinks 5 times means all matched remotes were deleted.

Use Power Restart

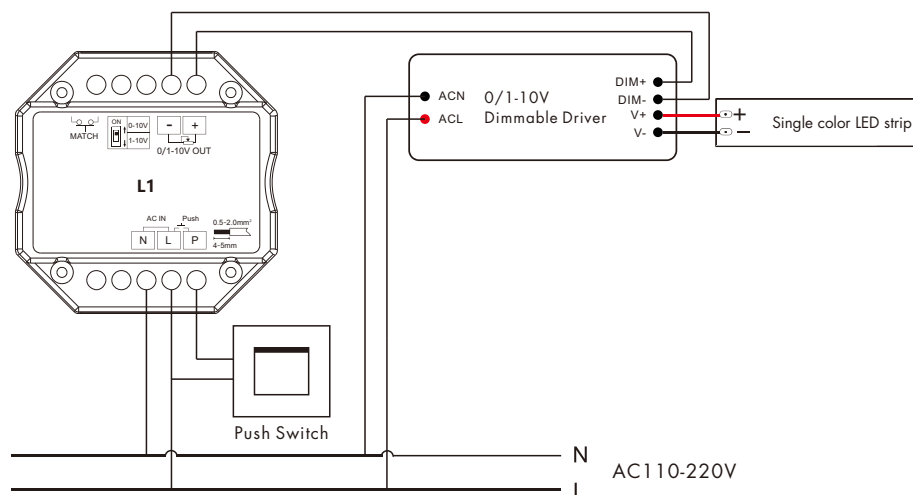
Match:

Switch off the power, then switch on power, repeat again, Immediately short press on/off key (single zone remote) or zone key (multiple zone remote) 3 times on the remote. The light blinks 3 times means match is successful.

Delete:

Switch off the power, then switch on power, repeat again, Immediately short press on/off key (single zone remote) or zone key (multiple zone remote) 5 times on the remote. The light blinks 5 times means all matched remotes were deleted.

Wiring diagram



Note: We recommend the number of LED drivers connected to 0/1-10V dimmer does not exceed 50 pieces, the maximum length of the wires from dimmer to LED driver should be no more than 50 meters.

Push-Dim function

- **Short press:**
Turn on or off light.
- **Long press (1-6s):**
Press and hold to step-less dimming,
With every other long press,
the light level goes to the opposite direction.

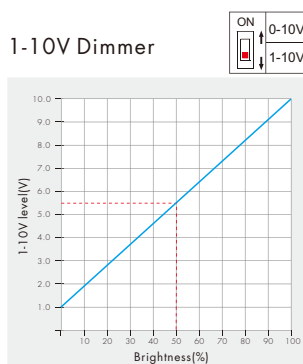
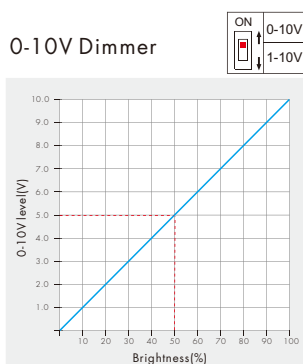
Light on/off fade time

Long press match key 5s, then short press match key 3 times, the light on/off time will be set to 3s, the indicator light blink 3 times.

Long press match key 10s, restore factory default parameter, the light on/off time also restore to 0.5s.

0-10V or 1-10V dimming setting

Select 0-10V dimmer or 1-10V dimmer according to dimmable LED driver.



Installation Precautions

1. The product shall not be installed close to the switching power supply with an interval of $\geq 20\text{cm}$ to avoid the radiation interference of the switching power supply.
2. The installation height shall be $\geq 1\text{m}$ from the floor to avoid shortening the remote control distance due to too weak reception signal.
3. The products are not allowed to be close to or covered by metal objects, with an interval of $\geq 20\text{cm}$ to avoid signal attenuation and shorten the remote control distance.
4. Avoid installation at the corner of the wall or the corner of the beam, with an interval of $\geq 20\text{cm}$ to avoid signal interference.