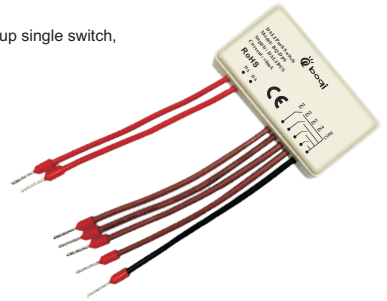


# DALI Push Switch

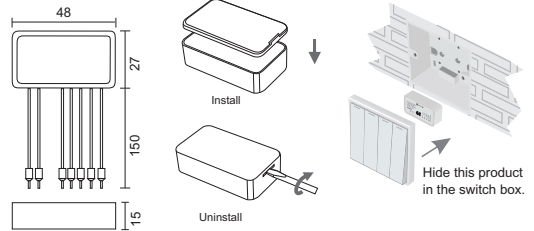
- 6 in 1 function: single address single switch, single address double switch, single group single switch, single group double switch, scene switch, broadcast switch.
- PC plastic shell, small size, easy installation.
- No external power supply, simply connected to the DALI bus.
- Low voltage operation, safe and reliable.
- Ordinary reset switch can achieve DALI intelligent control.
- Applicable to home, office, hotel, supermarket etc.



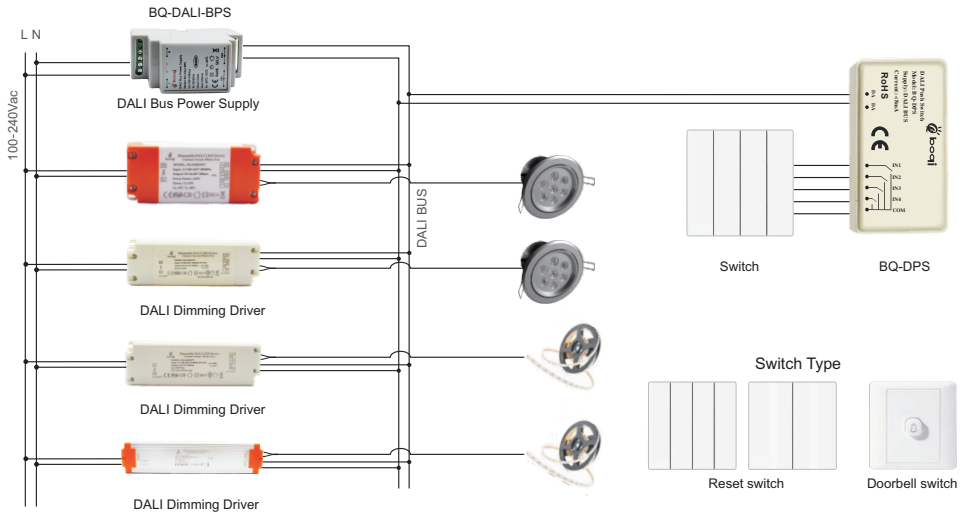
## Main Characteristics

- Interface Protocol: DALI (IEC62386)
- Power Supply: DALI Bus
- Current:  $\leq 8\text{mA}$  (static)
- Working Temp.:  $-30^{\circ}\text{C} \sim 55^{\circ}\text{C}$
- Mode:
  - Single address single switch
  - Single address double switch
  - Single group single switch
  - Single group double switch
  - Scene switch
  - Broadcast switch
- Dimensions: L48×W27×H15(mm)
- Package Size: L50×W40×H40(mm)
- Weight(G.W.): 32g

## Dimensions Unit: mm



## Connection



## Installation

1. Disconnect the power supply of all devices on the DALI bus before installing.
2. Connect according to the above wiring diagram. DALI bus does not distinguish plus-minus polarity. Meanwhile connected to the reset switch.
3. Open the shell, set up the address.

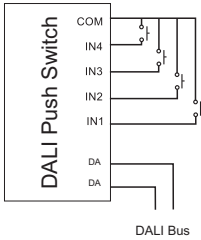
Note: This product is only suitable for the reset switch. It can be Key 1, Key 2, Key 3 or Key 4.

## Troubleshooting

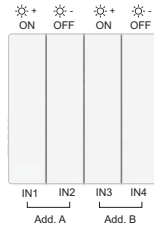
If the switch failure occurs after pressing, please check:

1. If the connection is correct;
2. Make sure to use the reset switch;
3. Check if the DALI power output is stable.

### Diagram



**Single address single switch**  
(four keys, four addresses)  
**Single group single switch**  
(four keys, four group addresses)  
**Scene switch**  
(four keys, four scenes)  
**Broadcast switch**

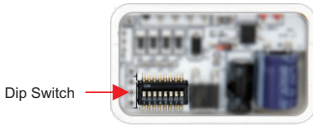


**Single address double switch**  
(four keys, two addresses)  
**Single group double switch**  
(four keys, two group addresses)

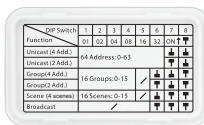
First address is for key 1, next address is for key 2.....  
Short press IN1/2/3/4 is on, press again is off.  
Long press IN1/2/3/4 to increase brightness,  
long press again to decrease brightness, as so on.  
Note: no long press function for scene switch.

First address is for key 1 and 2, next address is for key 3 and 4.  
Short press IN1/3 is on, short press IN2/4 is off.  
Long press IN1/3 to increase brightness,  
long press IN2/4 to decrease brightness.

### Setting Method



Dip Switch



Address value = the total value of (1-6),  
to get the place value when in "on" position,  
otherwise will be 0.

Uninstall the lid and find the Dip Switch.

Set address following the methods on the lid.

No.	Mode	Setting Method
1	<b>Single address single switch</b> 4 keys control 4 addresses Address mode: 0-63	
	<b>Single address double switch</b> 4 keys control 2 addresses Address mode: 0-63	
3	<b>Single group single switch</b> 4 keys control 4 group addresses Group mode: 0-15	
4	<b>Single group double switch</b> 4 keys control 2 group addresses Group mode: 0-15	
5	<b>Scene switch</b> 4 keys control 4 scenes Scene mode: 0-15	
6	<b>Broadcast switch</b> Any key can control ON/OFF and dimming of all addresses.	-